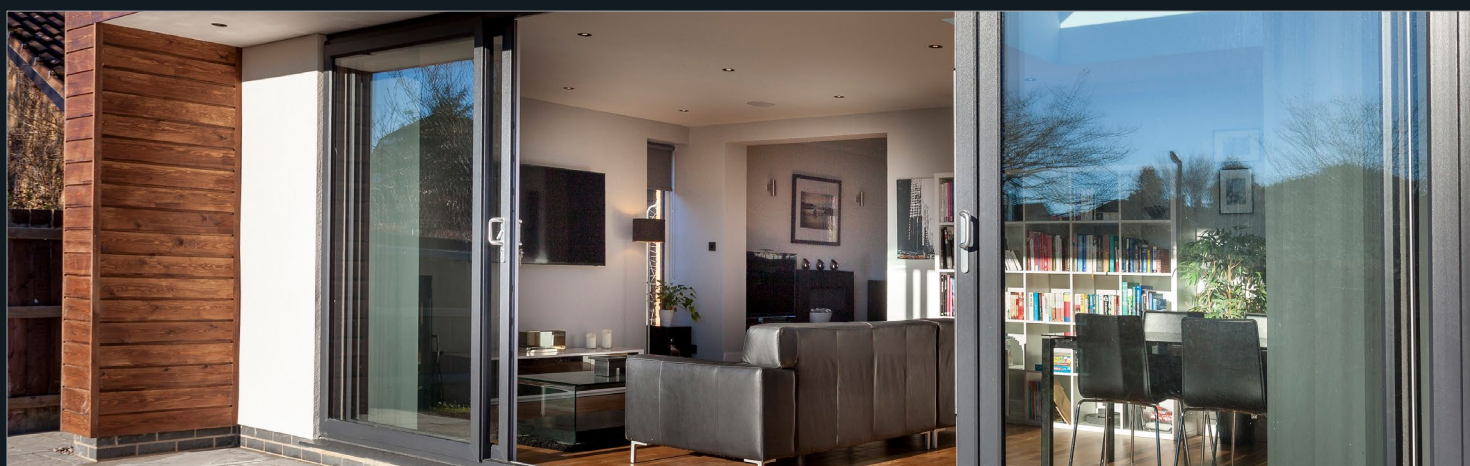


Modern Living



Welcome

to the Formula One Range Modern Living Guide

Whether it's sliding patio doors or ultra-modern bi-folding doors, our comprehensive range of products will allow you the freedom to really transform your home and maximise your space. Designed for every aspect of modern living.

Sliding Patio Door

All of our sliding patio doors are bespoke to your requirements. Individually manufactured to your exact measurements and to a design of your choice.

Available in 2, 3 or 4 pane configurations. There are a range of colour options available for the frame in addition to a choice of handle styles and finishes. A low threshold option is also available, ideal for improved family friendly access. Our sliding doors are extremely easy to use, lightweight in their operation and extremely resilient. Guaranteed for 10 years they won't fade, split, or warp and will withstand even the worst of the British weather conditions.

KEY FACTORS

- Six point locking system for outstanding security
- Anti-bump lock cylinders
- Secure By Design achievable
- Internal sliding panels for added security
- Choice of handle colour
- Choice of colour finishes
- High performance 28mm glass as standard
- Concealed fixings
- Multi chamber sash for maximum thermal efficiency
- Insulated to help block out external noise
- Fully compliant with CE marking regulations

HANDLES



COLOURS & FINISHES



All colours are for visual representational only

Bi Fold Doors

The Formula One Range of bi-folding doors really give you the opportunity to maximise the space in your home and effectively bring the outside in. Exceptionally stylish, secure and energy efficient.

The Formula One bi-folding doors come in a choice of colours and finishes with various options for handles and hinges. They are also extremely simple to use, unobtrusive and ideal for all homes. With configurations varying from 2 panels up to 7 there is an option to suit any type of property offering wide span door openings.

Our bi-folding doors are also manufactured to your individual specification. We make them to fit, we don't make them fit!

The added option of internal or external openings mean they really can be installed in any number of localities throughout your property.

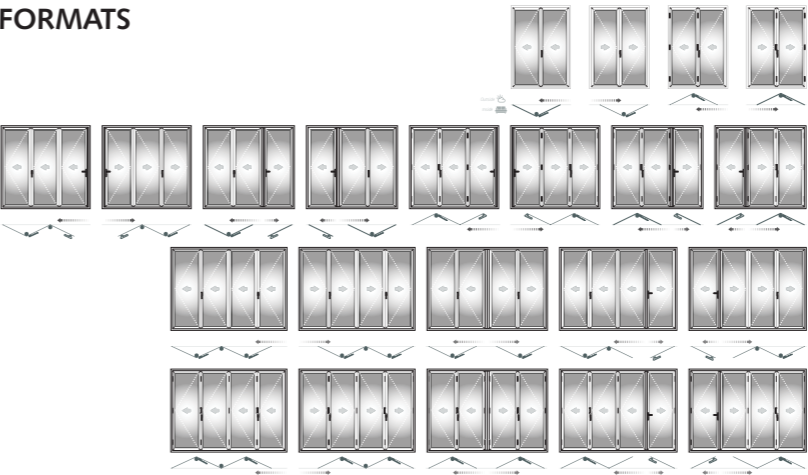
KEY FACTORS

- A hybrid combination offering a smooth finish powder coated aluminium outer frame for structural integrity and a PVCU opener
- Energy efficient
- Low threshold option available
- Exceptional security features as standard
- Over 20 colour combinations
- Available with 1 opening door feature for practicality
- Family friendly
- 10 Year manufacturers guarantee
- Shootbolt locking mechanism as standard
- Supplied with 4 choices of colour outer frames as standard (mill, white, golden oak and rosewood). Additional colours are available upon request
- Manufactured to fit your bespoke specification
- Enhanced weather performance seal available on request

HANDLES



FORMATS

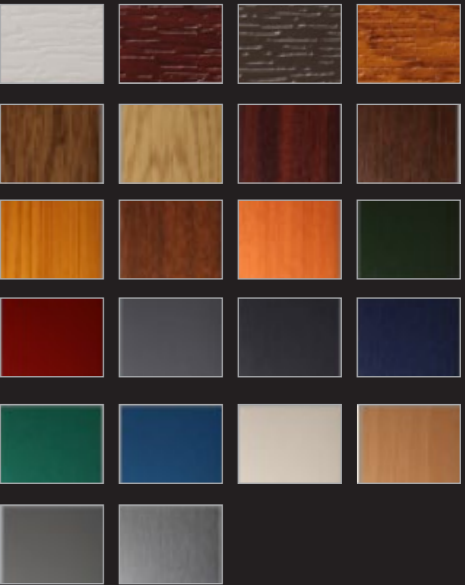


STANDARD FINISHES

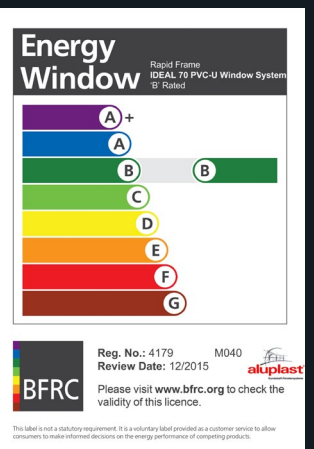
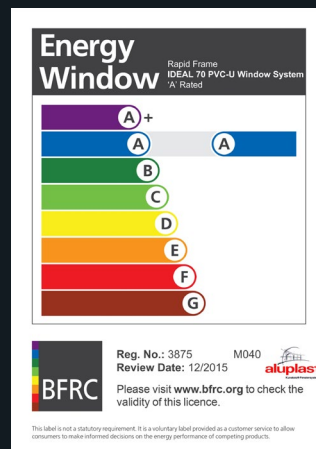
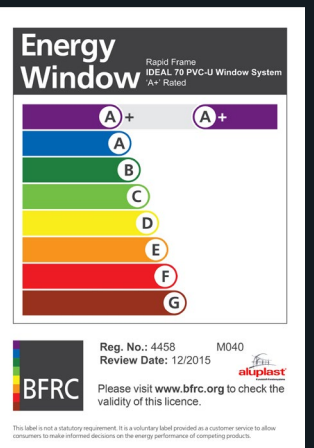
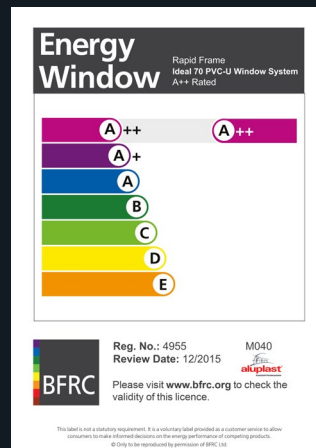



OTHER EXAMPLE FINISHES

Including white, mahogany, cream, green, red, blue, walnut, birch, natural, oak and many more in foiled finishes.



All colours are for visual representational only





BS 7412/PAS24
Licence No. KM569436



BS 7412
Licence No. KM569232


ISO 9001:2008
Licence No. FM 513636

BS 7412/PAS24
Licence No. KM 569233

Secured by Design



Police Preferred Specification



energy saving trust
endorsed product

Selected products supplied and manufactured by Rapid Frame Limited are certified to the above accreditations.



Please return this brochure to showroom when finished in the interests of saving a tree. Alternatively, please pass to a friend who may find this leaflet interesting. Thanks!

